



Windmill Post Summer 2026



**For the Communities of
Rogiet, Llanfihangel &
Common-y-coed**

Edited by Cllr Phil Ellwood



What we have been doing

We have continued to maintain our core services to the community, including play park and games court equipment, grass / hedge cutting (we pay MCC to do this), taking care of our war memorial, emptying dog waste bins, responding as consultee to planning applications, providing a Christmas tree and lights, and helping residents access services from MCC and other agencies.

We have continued to maintain the Rogiet Hub (Pavilion) building, which provides facilities for two local organisations: Little Tigers Daycare, and Severn Tunnel Football Club. The building continues to be an expensive-to-maintain asset with low revenue returns with little potential to improve the financials. See our Rogiet Hub update article.

Following the successful upgrades to the MUGA lights and their controls, we are now turning our attention to the court itself, which requires renewal of the playing surface, markings and kick-boards. We are in the process of obtaining quotes and considering the budget implications.

The new planters at the bus stops on the north side of Caldicot Road have been in place for a year now and we are very pleased with them; they are much smarter and easier to take care of than the old wooden ones. We decided to remove the wooden planters at South Grove and Slade View, as they were in poor condition and the site conditions were not ideal to install replacements, but we are looking at options to improve the roundabout. We continue to keep the stone planters by the war memorial looking attractive in all seasons.

We have provided financial support to various community groups and services, notably this year to Monmouthshire County Citizens Advice and to Caldicot Food Bank.

We have regularly attended MCC's Severnside Area Committee and One Voice Wales meetings, where we make sure Rogiet's needs and priorities are voiced. New for 2026, we will also be represented on Monmouthshire Transport Forum.

From all of us at Rogiet Community Council, we wish you all a very pleasant summer.

Our future plans

Our main focus in the coming months will be to progress our vision for improving village life through our Rogiet Hub project - see our update article on Page 3.

We will continue to look at options to improve the accessibility aspects of the path between Rogiet Playing Fields car park and the Hub / MUGA / Café area. We are still consulting MCC and potential contractors. A new factor to consider is that MCC is proposing to create an Active Travel route option on the same stretch of path.

We will progress our Five-Year Plan, to ensure it describes our vision for the community. We were delighted to welcome Mr Robin Castree to join our Five-Year Plan Working Group, as a member of the public.

We have decided to run *Rogiet in Bloom* again this year - see article on Pages 14 & 15.

We will of course continue to maintain and improve core services and keep a close eye on any strategic developments with impacts on Rogiet, for example, TfW / MCC proposals for development of STJ Station and access from the B4245 and M48. We will also continue to

monitor the progress of MCC's Revised Local Development Plan (RLDP).

We will again run our series of quarterly Councillor Surgeries, where residents can come to speak to us about their concerns. See Page 5 for the timetable.

New Councillor - Stephen Pickin

Hi, I'm Stephen Pickin and I have recently been co-opted onto Rogiet Community Council.

I have lived in the Village with my family for over 30 years and I have seen some changes over this time. For example, new Housing, a new School, the development of the redundant railway sidings into the Countryside Park and recently the Community Café and Shop.

I volunteered to be a Community Councillor as I would like to give something back to the village and provide time to assisting in maintaining and improving the area, so that Rogiet is a desirable place for its residents to live.

Rogiet Hub - update

We are making progress with our project to refurbish and re-configure our existing pavilion building to provide improved community facilities. We have recently engaged Mr Phil Bearpark, a resident of Rogiet, as our volunteer Business Case Writer. Phil has also joined our Hub Working Group, as a member of the public. Phil has already created a first outline draft of the Business Case. Welcome on board, Phil!

On 28 April we attended a National Lottery Community Fund Workshop at Magor and Undy Community Hub. This event gave us an opportunity to discuss our project with the Grants Officer from National Lottery and to gain advice for going forward with a full application for lottery funds. We are also researching other potential sources of funding; and we continue to set aside a proportion of precept funds into ear-marked reserves.



Perspective view showing access improvements and new sports changing cabin

Hiring the new community space in the future Rogiet Hub

Do you currently run (or would you wish to run) a club, class or other activity?

Are you looking for a new or different venue in Rogiet?

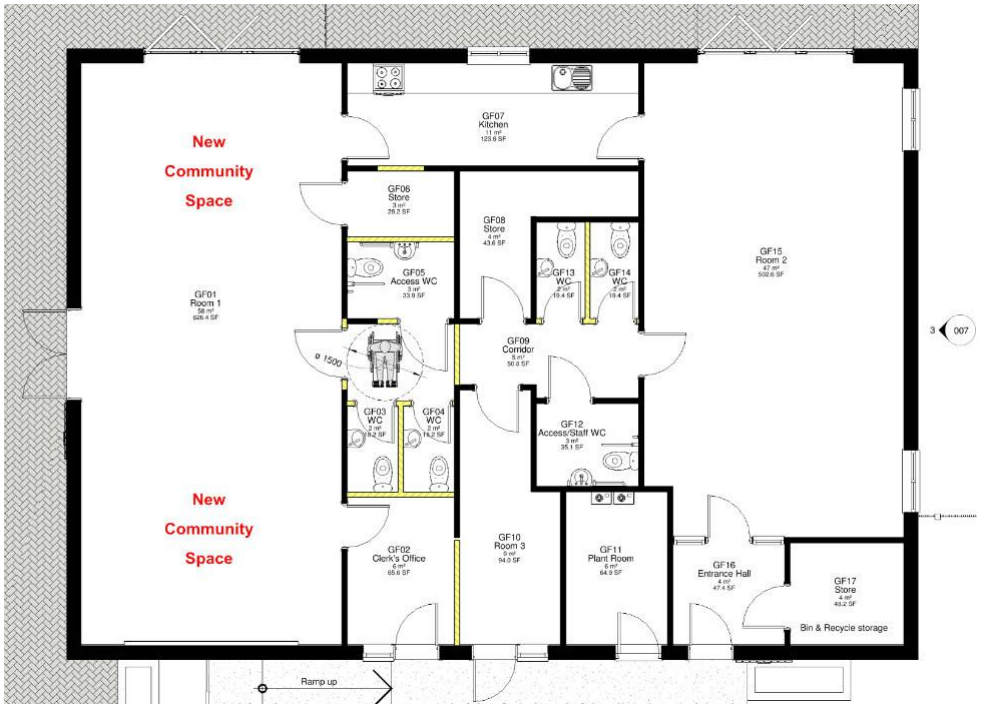
Then we've something exciting to offer and we'd be very interested to hear from you!

Our future refurbished Rogiet Hub will feature a new community space of 58 m² (626 sq ft), dividable into two sections, with access to a rear garden through bi-fold doors. This exciting new space will also feature a shared kitchen and modern unisex toilets, including a fully wheelchair-accessible unit.



This space is not yet available but we are looking now for expressions of interest from potential hirers to help us build our business case for the development project.

Please get in touch if you would like to join our 'interested' list.





Councillor Surgeries

Come along and meet your local councillors. We can help with local issues and concerns. Or just come along to learn more about the area.

Surgeries will take place quarterly in the coming year:

- Tue 2nd June 2026: 10-11 am Rogiet Hub (Pavilion) - *outside Pavilion, weather permitting, otherwise in Café*
- Mon 7th September 2026: 6-7 pm at Rogiet Hub (Pavilion)
- Tue 1st December 2026: 10-11 am at the Church Hall (TBC)
- Mon 1st March 2027: 6-7 pm at Rogiet Hub (Pavilion) (TBC)



Magor Forget-Me-Nots

**A get-together for anyone affected by
or caring for someone with dementia.
A friendly and supportive place to chat,
drink tea and coffee, and be encouraged.**

Magor Baptist Church

1pm - 3pm

Every other Wednesday

For details call Helen on 07963 853827

E-mail: hellwood29@outlook.com



Joe Cartwright - Village Baker (article by Peter Strong)



Many older residents of Rogiet will remember North's bakery at Wyesham House, Number One, Sea View, Station Road.

The bakery was originally owned by Joseph Cartwright. We know something of his story because he and his wife were visited by a reporter from the South Wales Argus on the occasion of their golden wedding anniversary in September 1943. The Argus reported:

"He had practically no education and was working at the age of ten. Mr Cartwright realised the handicap and lost no opportunity of gaining sufficient knowledge to make his own way in life, and made a great success of the job. Like his wife, he enjoys splendid health, and still takes an active part in running the business.

Mr Cartwright was born at Kimber, South Staffordshire on 18th February 1864, which makes him 79. He went to Caldicot in 1879, when his parents moved there. His father was on the staff of the old wireworks, of which his grandfather was manager. He returned to Kimber with them, but went back to Caldicot in 1883, and entered the service of Mr Stell, baker. He remained there for some years until, in 1896, he set up in business on his own account at Rogiet, when the district had not developed. There were very few houses in the district at the time, and Mr Cartwright remembers when a thatched cottage stood on the present site of the Rogiet Hotel. At the time Ifton did not exist. Mr Cartwright remembers the old bobbin and peak hat factories at the Back, Chepstow.

He entered horses and won prizes at Chepstow and Magor shows, and was very fond of sports generally. Mr Cartwright claims to have introduced association football to the county 50 years ago and he captained the Caldicot team for three years. He also played rugby for Caldicot before he was married and ran with the old Chepstow Harriers, prior to which he was captain of the Kimber Harriers. Mr Cartwright was a keen long distance runner, and won the long jump at the Jubilee Sports at St Pierre.

Mr Cartwright's other past interests included beekeeping, and he was also one of the first managers of Rogiet School.

Mr and Mrs Cartwright possess a unique collection of antiques, among which is a coloured vessel given to Mr Cartwright by his aunt. It was used at Portskewett Church at one period.

Mrs Cartwright, who is a few years older than her husband, is a daughter of the late Mr and Mrs George Jones of Caldicot. Her father was a builder and contractor, and restored Caldicot Castle and Parish Church, and also built the present Non-Provided School.

Mr and Mrs Cartwright had eight children, of whom six are still alive."



In a letter to Bill Winter, Clerk to Rogiet Community Council, written in 1992, his granddaughter, Mrs Pinchin, of Bulwark, recalled that once the first loaves of bread were taken out of the oven in the bakehouse at the back of the house, villagers were able to put joints of meat in for roasting.

In spite of being in "splendid health" in 1943, he died two years later in October 1945. He was clearly well respected in the district. St Mary's Church Rogiet was packed for his funeral. Amongst the mourners were local bakers R. Hill and J. Stell of Caldicot, and F. Drower of Caerwent, while a floral tribute was sent on behalf of Chepstow Master Bakers' Association. Other floral tributes included those from the YMCA at Caldicot, 'all at Rogiet Post Office', Caldicot Methodist Church and

even laundry staff at the Royal Naval Propellant Factory, Caerwent.

The business was taken over by one of his workers, Ronald North, who had worked for Mr Cartwright since the age of 13, and later by Ronald's son Terry, until it closed in 2001.

Notes

The 'old wireworks' was opened at Caldicot Pill in 1862 by Henry Hughes, of Tintern, who moved his factory from Tintern to be close to the railway line. It enjoyed a chequered history, frequently opening and closing. It later became Linpac Metal Decorators.

"Ifton did not exist": there was a separate parish of Ifton at the time but the church had long disappeared and there were only four houses in the parish, with a population of 22.

Mr Cartwright's claim to have introduced association football to the county should be treated with caution. The South Wales and Monmouthshire Football Association formed 1893. By 1893 Newport Association Football Club was playing games on Thursdays and Saturdays. The Argus reported that a club had been formed in Llandogo in the same year.

Photos

Front cover - a general view of Seaview Terrace and Station Road, probably taken around the 1920s, shows Cartwright's bakery on the right, the Roggiett Hotel in the centre and St Mary's Church on the left. Above left - Mary and Joseph Cartwright at their Golden Wedding in 1943. Above right - Joseph Cartwright circa 1943.

What's been going on at Rogiet Community Junction?



Since opening our doors last October 2025, Rogiet Community Junction Shop & Cafe has quickly become a warm and welcoming hub at the heart of local life. What began as an ambitious project has already grown into a much-loved space where the community can meet, connect and support one another.

Over the past few months, the team has been busy getting to grips with the day-to-day running of the Shop & Cafe, while also building a fantastic and dedicated team of volunteers, without whom this would not be possible. Their enthusiasm and commitment have been key to creating the friendly atmosphere that so many of you have already enjoyed.

This year, the focus is on growth and community connection. Plans are underway to host a wide range of events, from family-friendly activities to themed evenings and workshops, so make sure you keep an eye out for our upcoming events. The aim is simple: to make this space not just somewhere you visit, but somewhere you feel part of and we're always open to suggestions, so pop in and chat to the Cafe Manager if you have an idea.

Of course, alongside these new plans, the Shop & Cafe continues to offer our regular services, providing essential items, delicious refreshments, and a welcoming place to pause and chat. Every visit helps support the ongoing success of this community-led venture.

There are many ways to get involved. Whether you'd like to volunteer some time, share ideas for events, or simply drop in for a cup of tea and a friendly face, your support makes all the difference. This is a space built by the community, for the community and we're excited for what's to come.

We look forward to seeing you soon!

Opening hours Monday - Saturday

Shop: 9am - 5pm for you to pick up all of the essentials.

Cafe: 9am - 4pm, serving hot food 9.30am-3.30pm and coffee and cake all day.

How to find us: Rogiet Community Junction, Westway, Rogiet, NP26 3SP.

(what3words: ///piano.repayment.tinsel)



Ariennir gan
Lywodraeth Cymru
Funded by
Welsh Government

Have you thought about trees and their uses?

(article by Cllr Marj Winskill)



Trees are essential for fighting climate change by absorbing carbon dioxide and releasing oxygen; they reduce urban temperatures by up to 5°C during heatwaves; and they prevent soil erosion and mitigate flood risk.

Trees provide vital habitats for birds, insects and fungi which are crucial for fighting biodiversity loss.

Trees create wildlife corridors which are a vital linear landscape feature, such as hedgerows, tree lines and riverbank vegetation, that connect isolated habitats allowing animals to travel, forage and migrate safely - particularly when areas are broken up by

farmland, fences or gardens etc. Hedgerows provide essential shelter and food for species like birds, small mammals and insects.

Planting hedgerows, trees and shrubs in a continuous line can form an effective corridor using native species like hawthorn, blackthorn and hazel. Connecting gardens can provide crucial corridors for hedgehogs in particular which are great at keeping your slug and snails under control.

Trees in the spring are particularly beautiful. Driving around or walking you will have noticed the fabulous Magnolia trees some people have in their gardens. If you have a small space choose compact, dwarf or slow growing varieties, such as:

Magnolia Stellata (Star Magnolia): Slow-growing, bushy, and ideal for small spaces, reaching only about 2.5–3m in height.

Magnolia 'Susan': A popular, compact, and slow-growing hybrid with deep pink-purple flowers, reaching roughly 3m.

Planting trees today is a vital investment in a sustainable, breathable, and cooler future.



Severn Tunnel Centenary Mural (1886-1986) (article by Cllr Phil Ellwood)



In 1986 a large (24 ft x 4 ft) mural was commissioned to celebrate the centenary of the opening of the Severn Tunnel in 1886. The artist was a Caldicot man, Paul Burgess, who was employed as a shunter at the Severn Tunnel Junction Freight Depot. Following a creation period of nearly three months the mural was installed on the railway-facing side of the amenity block at the depot and officially unveiled at a ceremony on 18 May 1986 by JW Harvey, a great-grandson of Thomas A Walker, the tunnel's Construction Engineer.

Unfortunately, the life of the mural at the depot was destined to be very short lived. At the time of the unveiling it was already known that the depot and marshalling yards were to be closed just 14 months later, with the loss of more than 400 jobs.

When the depot was closed in 1987, the mural was moved to Gloucester Station, where, after another unveiling ceremony on 12 October 1989, it was displayed on Platform 4 for many years, until around 2022, before going into storage when a major station redevelopment required the space occupied by the mural.

County Councillor Peter Strong and Rogiet CC have worked together to negotiate with GWR the repatriation of the mural back 'home' to Rogiet. This finally happened last December, when Cllrs Paul Cromwell and Phil Ellwood went to Gloucester to retrieve it, with the kind assistance of local resident Simon Roberts,



Following the return of the mural to Rogiet, the artist, Paul Burgess and Cllr Ellwood removed the acrylic sheet covers and gave the painted board surfaces a good clean. Paul then assessed the mural for restoration needs and determined that it would benefit from stripping off the old varnish, then doing some minor touching up, and then applying a coat or two of new varnish. Paul kindly agreed to undertake this work, free of charge, at his art studio near Monmouth. The restoration was completed during the spring, and the mural was returned to Rogiet on 15 May, looking fabulous.



Rogiet CC is still discussing ideas for a permanent home for this important piece of local art. We have looked at a number of options, including Rogiet Hub (Pavilion), Rogiet Community Junction (shop / café), Rogiet Primary School, Junction Tracks, Rogiet Allotments (Big Shed), and of course Severn Tunnel Junction Station. We have quickly eliminated Rogiet Hub and Rogiet Community Junction, because there simply isn't the space available, either inside or outside the buildings. The STJ station idea has been discounted, owing to the lack of a



suitable building or other structure on which to mount the mural safely. The only possibility we saw was mounting it on the railings between Platform 4 and the car park - but we considered that would be a poor choice owing to the weathering from both sides, and the risk of vandalism.



Our current front runners are Rogiet Primary School (east elevation, facing Westway), the Allotments Shed, and Junction Tracks. We are waiting for a feasibility check and quotation statement from MCC Estates, regarding the school location. We are of course open to ideas from the community about a suitable permanent home for this wonderful piece of art and history. If you have an idea, please get in touch!

Rogiet Allotment and Leisure Gardeners Society

(article by Heather Hughes, RALGS Secretary)

Celebrating Community, Growth, and Giving

Allotments are much more than just places to grow vegetables—they are vibrant hubs where people of all ages can come together, share their passion for gardening, and learn from each other. At Rogiet Allotments, we're proud to provide outdoor spaces for those who may not have gardens of their own, creating opportunities for everyone to get involved in cultivating fresh produce and building lasting friendships.

Our Society is deeply committed to engaging with the local community. We regularly collaborate with Rogiet Primary School, offering educational talks about bees and environmental topics, and helping children set up their own vegetable patches. These activities not only nurture the next generation of gardeners but also inspire greater awareness and appreciation for nature among young people.

Community support is at the heart of what we do. Several of our members donate surplus produce to the local community café, ensuring that fresh, home-grown fruit and vegetables are available to all. During the summer months, you'll often find baskets of excess produce placed outside the allotments, inviting residents to help themselves and enjoy the fruits of our collective labour.

One of the highlights of the year is our produce show, where members proudly display the results of their hard work. This event is a wonderful opportunity for everyone to celebrate their achievements and share gardening tips. At the end of the day, all the exhibited produce is offered to the community, reinforcing our commitment to sharing and generosity.

Last September, we held our first charity fund raising event where we raised an amazing £1,103 for Macmillan. Thanks to everyone's efforts, we were able to make a meaningful contribution to Macmillan, helping them continue their vital work supporting those affected by cancer. We hope to build on this success and we're excited to announce our upcoming coffee morning in support of St David's Hospice. Join us on the 6th of June at 9.30 for coffee, tea, and cakes—all are welcome!

It's a fantastic occasion to meet fellow gardeners, support a worthy cause, and enjoy some delicious homemade treats. Your presence and contributions will help us raise vital funds for St David's Hospice, making a real difference in our community.

We invite everyone to get involved with Rogiet Allotment Society, whether you're an experienced gardener or simply curious about growing your own food. Together, we can continue to build a supportive, inclusive, and thriving community.

For further information, please go to the RALGS web site: <https://ralgs.weebly.com>.



Flowers to attract wildlife and insects into your garden

(article by Cllr Anna Wilson)

Spring is here and we are now able to get out into our gardens at last (hopefully!) If you like putting flowers and shrubs into your gardens, do you think about which ones you could plant to attract wildlife and insects? Here are a few ideas.



Set up a Nectar 'café' by planting flowers for pollinating insects, bees, butterflies

- ◇ Choose a sheltered sunny spot
- ◇ Place plants in groups so that the colours and scents are easy to detect
- ◇ Prolong the flowering season – select plants so that you have a show of flowers from early spring to late autumn
- ◇ Choose flowers with simple, flat petals as they are the easiest for insects to feed from
- ◇ Provide a night time feast for moths
- ◇ Plant night-scented flowers
- ◇ Add herbs as they are highly attractive to insects



Make a DIY Bee Hotel and Bee / Butterfly water trough - the bees will love it!



And for a quickly flurry of beauty, just buy a packet of wild flower seeds and sow them in a bed of earth - quick and easy!

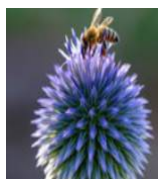


Rogiet in Bloom 2026

Undy and Magor Horticultural Society have kindly offered to come and judge the competition during the fourth week of July 2026 (except for the Tallest Sunflower category, which will be judged in mid/late August).

Categories

- Most Colourful Garden
- Most Insect / Wildlife Friendly garden
- Best Containers and / or Hanging Baskets display
- Best Kept Allotment
- Most Variety Allotment
- Tallest Sunflower



Note: gardens, containers / baskets and sunflowers must be visible to the judges from outside the property boundary.

Competition Entries

Entry is free and prizes will be awarded to the winners. To enter, please complete the form opposite, or enter online with the link or the QR code.

Judging Guidelines

We would encourage you to use peat free compost in your entry.

Judging will take place during the fourth week of July 2026 (mid/late August for the Tallest Sunflower category) based upon the following criteria:

- Impact
- Variety and use of range of plants
- Colour combinations
- Originality and design



Rogiet in Bloom 2026

Competition Entry Form

Name:

Address:

Phone Number:

A phone number is mandatory for the Tallest Sunflower category, to enable the judges to request permission to enter your garden to measure the heights of the sunflowers. Otherwise, optional.

Category(ies) to be entered - please tick below:

- Most Colourful Garden *
- Most Insect / Wildlife Friendly garden *
- Best Containers and / or Hanging Baskets display *
- Best Kept Allotment
- Most Variety Allotment
- Tallest Sunflower *

** Note: gardens, containers / baskets and sunflowers must be visible to the judges from outside the property boundary.*



Please leave your completed form in one of the following places:

- Box in Rogiet Community Junction Café
- Pavilion Post Box (red box attached to fence)
- Email: clerk@rogiet-cc.gov.wales



Alternatively, complete the online form: <https://forms.office.com/r/U7ZYSdtSMQ>



The Herbert Protocol



944K+

Just under 1 million people living with dementia in the United Kingdom



70%

people living with dementia will go missing at least once



40000+

people in the UK living with dementia are reported missing for the first time every year

The Herbert Protocol is a national scheme designed to ensure that individuals living with dementia who may be at risk of becoming lost are found and returned home safely.

Across England and Wales, police and emergency services use the Herbert Protocol to provide a compassionate and proactive response when a person with dementia goes missing.

The Herbert Protocol is a form that captures key details about someone with dementia—such as their appearance, current photo, medications, emergency contacts, and familiar locations—to help authorities respond quickly if they go missing.

The form can be completed by an individual living with dementia, a family member, or a carer, and includes essential information such as personal details, daily routines, places of interest, emergency contacts, medical history, and a photograph. This data is securely kept in a database, making it easily available to police in emergency situations.

The protocol is named after George Herbert, a war veteran of the Normandy Landings who lived with dementia. Following several instances in which Mr. Herbert went missing, Norfolk Constabulary recognised the need for an improved method to safeguard vulnerable individuals. This consideration prompted the development of the Herbert Protocol, with the aim of intervening early and reducing associated risks.

For more information and an online form please visit the following website:- <https://herbertprotocol.com>

You can also visit the South Wales Police website for more information and to download a copy of the form by using the following link:-
<https://www.south-wales.police.uk/notices/af/herbert-protocol/>

Mr Herbert passed away in 2011 while searching for his childhood home. His legacy continues, inspiring kindness and providing safety for those who venture into unfamiliar places due to memory loss.

The Trinity Protocol



What is the Trinity Protocol?

The Trinity Protocol is a safeguarding scheme developed by Gwent Police in collaboration with Trinity Fields School.

Purpose

It allows parents and carers to provide pre-completed information packs about individuals with additional needs, such as Autism, ADHD, or Global Developmental Delay, to the police.

How it Works

The information helps officers adapt their response if they encounter the individual, whether they are missing, a victim of a crime, or involved in a general incident.

Registration

You can download a form from the Gwent Police website to store digitally or keep at home. The form includes all the essential fields you will need to fill out. After completing it, make sure to keep it somewhere safe so you can access the information quickly if needed.

Trinity Fields Additional Needs School

The scheme is named after Trinity Fields Additional Needs School in Caerphilly, where Gwent Police launched the UK's first police cadets scheme within an additional needs environment, the Trinity Protocol serves as a proactive way to reduce risks and enhance support for vulnerable community members.

What should I do if I need to ring 999 about someone I care for?

If you need police help for someone with additional needs and have a prepared pack, tell the caller about the Trinity Protocol, and keep the information ready to share.

If police visit your home about your report, you can give them the pack to help them assist your loved ones more efficiently. This also helps officers tailor their approach when interacting with individuals.



For more information on the scheme and to download a form please visit the following website address:- <https://www.gwent.police.uk/police-forces/gwent-police/areas/campaigns/campaigns/trinity-protocol/>

Just For Fun Puzzles

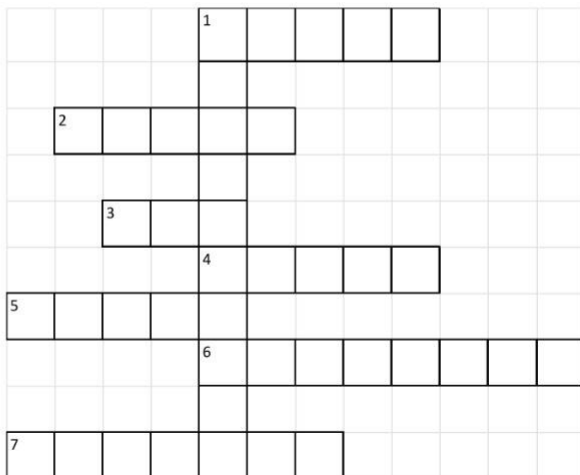
| | | | | | | | | | | | | | |
|---|---|---|---|---|---|---|---|---|---|---|---|---|---|
| H | S | N | O | M | E | T | S | N | E | P | A | V | A |
| C | O | S | M | O | S | E | S | U | C | O | R | C | L |
| H | D | L | P | R | I | M | U | L | A | T | H | E | O |
| R | A | P | L | L | A | A | I | K | R | A | L | C | I |
| Y | F | T | H | Y | M | E | C | A | L | I | L | N | V |
| S | F | E | S | U | H | T | N | A | Y | L | O | P | T |
| A | O | N | S | A | Y | O | N | D | M | H | E | E | C |
| N | D | O | E | M | A | P | C | U | O | A | S | O | M |
| T | I | T | V | R | C | Y | L | K | R | D | O | N | U |
| H | L | S | I | R | I | P | T | E | S | O | R | Y | I |
| E | U | R | H | G | N | N | K | N | Z | A | I | T | N |
| M | X | K | C | O | T | S | E | C | I | H | G | E | I |
| U | O | R | N | D | H | P | W | A | N | M | S | E | H |
| M | L | O | T | E | E | A | A | I | N | U | T | E | P |
| T | H | F | B | T | O | D | A | C | I | R | E | K | L |
| O | P | E | N | I | G | E | L | L | A | E | O | H | E |
| P | I | N | K | A | I | B | R | O | H | P | U | E | D |

| | |
|---------------|----------------|
| Chrysanthemum | Nerine |
| Chives | Nigella |
| Clarkia | Pear |
| Cosmos | Penstemon |
| Crocus | Peony |
| Dahlia | Petunia |
| Daffodil | Phlox |
| Delphinium | Pink |
| Erica | Plum |
| Euphorbia | Polyanthus |
| Fork | Pot |
| Godetia | Primula |
| Hebe | Rose |
| Hoe | Sage |
| Hollyhock | Stock |
| Hyacinth | Spade |
| Iris | Thyme |
| Lilac | Viola |
| Mint | Zinnia |

We have started the puzzle for you. When you've finished, the unused letters give you a phrase that all residents should do!

And for the children...

- 1D Some gardeners grow their seeds and tomatoes in one of these
- 1A This is green and we mow it
- 2A Plants need this to grow
- 3A Plants also need this to grow
- 4A We cut this barrier
- 5A Sometimes we put tables and chairs on this
- 6A We might put this up to shade us from the sun
- 7A We grow these in the garden—they are very colourful



Defibrillator Heart Restarter

Anyone can use it
No training necessary



For an unconscious person
NOT breathing normally



Call
999

Start
CPR

Switch on
defibrillator

Follow its
instructions

How to find a defibrillator in an emergency

When you contact 999, trained personnel will provide guidance on administering CPR (Cardiopulmonary Resuscitation), which is a life-saving procedure for individuals experiencing cardiac arrest. They will also identify the nearest operational defibrillator and instruct you on its proper use.



A defibrillator is a medical device designed to deliver an electric shock to the heart. It is used to restore normal heart rhythm in individuals experiencing cardiac arrest. It may also be referred to as a defib, public access defibrillator (PAD), or automated external defibrillator (AED).

Defibrillator cabinets are locked to prevent theft, vandalism, or damage. but in an emergency, a 999 operator will give you a key code to access the defibrillator quickly.

ROGIET MOWERS

Garden Machinery Service and Repair

07561 325319

rogietmowers@gmail.com

Best wishes
to all residents of Rogiet
from
County Councillor
Peter Strong



peterstrong@monmouthshire.gov.uk

07894 822004



T&S TYRES

Servicing and MOT's



Monday to Friday 8.30am - 5.30pm

Saturday & Sunday - CLOSED

Units B and D Cheeseman Industrial Estate



- Servicing
- Diagnostics • MOTs
- Brakes • Exhausts
- Air Con Reconditioning
- 4 Wheel Alignment
- Alloy Wheel Repair
- Wheel Refurb Powder Coating
- Full Range of Tyres Available
- Local Nexen Dealer
- Local Call Out Service



FACEBOOK • INSTAGRAM • TWITTER

info@tyresandservicingcaldicot.co.uk

01291 431444 • 07712 881883

www.tyresandservicingcaldicot.co.uk

Little Tigers Day Care



We provide:

Funded Flying Start sessions
Nursery Education funded sessions
Wrap around care
After school club
Holiday club

@Rogiet Primary School & The Pavilion
(next to the wonderful new cafe)

- full day care
- Mornings & Afternoon sessions
- Highly qualified staff
- 30 hours childcare offer

Open 8am until 5.30pm daily

Please contact us to check your post code or contact your Health Visitor for more information regarding Flying Start.

Early Years Wales Quality Assured Childcare
Rated 'Highly Commended'

To Book Your Place Call 07971 429868 or
Email - little-tigersrogiet@yahoo.co.uk



J Hirst

Painter & Decorator

With over 25 years experience as a self-employed Painter and Decorator we offer local affordable decorating service

**Call for a free no-obligation
Quote**

79 Green Lane

Caldicot

NP26 4HH

Email: jandjfirst1@googlemail.com

Mobile: 07706353538



FIND US ON
FACEBOOK





Adam & Eve HAIRDRESSERS

5b IFTON ROAD, ROGIET, NP26 3SS
01291 422181

Monday - Closed
Tuesday - 9 til 4.30
Wed to Fri - 9 til 5.30
Saturday - 8 til 1

CARS WANTED

bought for CASH!!

established since 1995

Most Makes and Models Considered

Cars Pickups 4x4s

Light Commercials & Motorhomes

Old Cars Old Bikes and Caravans

Julian Thorn

Magor Village
thornjtcars@aol.com

07860 570006



MOT'S CLASS 3, 4, 7

HACKNEY TESTS

MOTORHOME MOT'S & REPAIRS

PETROL & DIESEL VEHICLE SERVICING

CLUTCH, SUSPENSION & BRAKE REPAIRS

EV / HYBRID VEHICLE SERVICE AND REPAIRS

MANUAL & AUTOMATIC GEARBOX REPAIRS & SERVICING

AIRCON SERVICING & REPAIR

DPF CLEANING ON AND OFF CAR

ENGINE REPAIRS & REBUILDS

ADVANCED DIAGNOSTICS - CODING AND PROGRAMMING

CAMBELTS, WETBELTS AND TIMING CHAINS

2 & 4 WHEEL ALIGNMENT USING HUNTER 3D WHEEL
ALIGNMENT MACHINE

TYRES USING OUR FULLY AUTOTOMATED TYRE MACHINE

WARRANTY WORK

AA & RAC APPROVED

Whether you need a routine MOT & Service, an emergency car repair, or specialized automotive work, we have the expertise and equipment to get the job done right!

PHONE - 01291 422409

EMAIL - INFO@DMSAUTOSERVICES.COM



Hi, I'm Emily and I live in Rogiet 🇬🇧

Thinking of letting your property?

- ✦ Not completely happy with your current agent?
- ✦ New to being a landlord and not sure where to start?
- ✦ Want a second opinion?

No call centres.

No being passed around. Just clear, honest advice, and a friendly face!

lettings@proceed-property.co.uk
01291 428666
Unit 3, Riflemans Way NP16 5EN



**YOUR FRIENDLY, LOCAL
WINDOW CLEANING
SPECIALIST**
HIGHEST QUALITY GUARANTEED

SPECIALISING IN:

- Residential & Commercial
- Fascia & Soffit Cleaning
- Window Cleaning
- Gutter Clearing

**GET IN TOUCH
FOR A FREE NO
OBLIGATION QUOTE**

07895 905907



jjrwindows@gmail.com



Find Me on: [facebook](#) [Google](#) [nextdoor](#)



BRD
ROOFING

ROOFING *SERVICES*

Specialising in new roofs, repairs, fascias, soffits, guttering, chimney repairs, lead work, flat roofs, velux window installation, insurance work.

From small fixes to full replacements, count on us for high quality workmanship and a reliable service.

Based in Rogiet, Monmouthshire, covering surrounding areas.

- ✓ **Fully insured**
- ✓ **Free quotations**
- ✓ **Family run business**
- ✓ **20+ years experience**



enquiries@brdroofing.co.uk



07969496669



www.facebook.com/brdroofing

Contact details for Rogiet Community Council

Clerk / Responsible Financial Officer:

Alice Vaughan clerk@rogiet-cc.gov.wales

Tel: / WhatsApp: 07563 543959

Councillors:

Cllr Philip Ellwood (Chair) philip.ellwood@rogiet-cc.gov.wales

Cllr Beverly Cawley (Vice Chair) beverly.cawley@rogiet-cc.gov.wales

Cllr Paul Cromwell paul.cromwell@rogiet-cc.gov.wales

Cllr Stephen Pickin stephen.pickin@rogiet-cc.gov.wales

Cllr Janet Trow janet.trow@rogiet-cc.gov.wales

Cllr Anna Wilson anna.wilson@rogiet-cc.gov.wales

Cllr Marjorie Winskill marjorie.winskill@rogiet-cc.gov.wales

The Council has its own website <https://www.rogiet-cc.gov.wales> which will give you up to date information on our projects and other community activities.

We also have a Facebook page, where we post important information; and a Facebook group, to which members of the community can contribute and where we welcome local business advertisements (on Mondays only).

County Councillor for Rogiet:

Cllr Peter Strong PeterStrong@monmouthshire.gov.uk



Do you have any good ideas for articles and features in the next Windmill Post?
Would you like to write an article yourself? We would love to hear from you!